

RESEARCH

Open Access

Exploring the abomasal lymph node transcriptome for genes associated with resistance to the sheep nematode *Teladorsagia circumcincta*

Anton Gossner, Hazel Wilkie, Anagha Joshi and John Hopkins*

Abstract

This study exploited Blackface lambs that varied in their resistance to the abomasal nematode parasite, *Teladorsagia circumcincta*. Infection of these lambs over 3 months identified susceptible (high adult worm count, high faecal egg count and low IgA antibody) and resistant animals that had excluded all parasites. Previous work had shown that susceptibility and resistance is dependent on the differential immune response to the parasite, which occurs within the abomasal (gastric) lymph node (ALN) that drains the site of infection. The Affymetrix ovine gene array was used to interrogate the transcriptome of the ALN to identify genes and physiological pathways associated with resistance. We used a bovine RT-qPCR array of 84 genes to validate the gene array, and also report digital gene expression analysis on the same tissues, reanalysed using the Oar v3.1 sheep genome assembly. These analyses identified Humoral Immune Response, Protein Synthesis, Inflammatory Response and Hematological System Development and Function as the two top-ranked networks associated with resistance. Central genes within these networks were *IL4*, *IL5*, *IL13RA2* and in particular *IL13*, which confirmed that differential activation of Th2 polarized responses is critical to the resistance phenotype. Furthermore, in resistant sheep there was up-regulation of genes linked to control and suppression of inflammation. The identity of differentially-expressed chemokines and receptors in the resistant and susceptible sheep also begins to explain the cellular nature of the host response to infection. This work will greatly help in the identification of candidate genes as potential selectable markers of genetic resistance.

Introduction

Gastrointestinal nematode parasites are the cause of major economic losses to the sheep agricultural industry [1] and the major species in cool temperate regions is the abomasal strongylid *Teladorsagia circumcincta* [1,2]. The control of this parasite is largely by the use of broad-spectrum anthelmintics [3,4] but the increasing incidence of drug-resistant parasites and concern of drug residues in meat [5] has led to the search for alternative methods of parasite management [6]. The animals most susceptible to *T. circumcincta* are weaned lambs [7]. Most lambs eventually suppress infection [8] through the development of IgE and IgA anti-parasite

antibodies; but this takes more than 6 weeks of persistent infection with infectious larvae [9-11]. Mucosal mast cells have also been shown to play an important role in the limitation of larval colonization and expulsion of helminths [12,13] and these also function largely in association with parasite-specific antibodies [14]. However, some sheep in most flocks develop only low levels of helminth-specific antibodies and fail to control larval colonization and egg production. Indeed, IgA levels and faecal egg counts (FEC) have been used as selectable markers for resistance [8,15,16]. Furthermore, different sheep breeds show marked diversity in resistance to helminth infection [17-19]. Consequently, one strategy for the non-pharmacological control of parasites is the exploitation of genetic variation for

* Correspondence: john.hopkins@ed.ac.uk
The Roslin Institute & R(D)SVS, University of Edinburgh, Easter Bush,
Midlothian EH25 9RG, UK

resistance found within and between different sheep breeds [20,21].

Selection for resistance can be based on quantitative measurements of one or more phenotypic traits such as FEC and IgA antibody levels [16,22] but the identification of molecular markers is potentially a more reliable approach for high resolution selection [23]. There are three approaches for the identification of such markers, quantitative trait locus (QTL) mapping, genome-wide association studies (GWAS) and candidate gene analysis [24]. QTL mapping is of low power and requires extensive further work to identify candidate genes [25]. GWAS is expensive, requiring very large numbers of samples; in addition, lack of current sheep genomic resources mitigates against high resolution analysis [26]. The alternative candidate gene approach aims to evaluate the relationship between a phenotypic trait and a variation in a gene; this gene is selected by measuring differential expression in relation to a relevant phenotype. A number of studies have used sheep microarrays to identify genes and molecular pathways associated with host responses to abomasal nematode parasites in sheep. Most have analysed the transcriptome of the *Haemonchus contortus* or *T. circumcincta* infected abomasal mucosa [27-29] or afferent lymph cells draining that mucosa [30]. In addition, a RT-qPCR assay has been developed to analyse a limited number of immune-inflammatory genes [31]. However, the immune response to parasites in the abomasum takes place within the abomasal (gastric) lymph node (ALN) and the events within that node determine the quality and quantity of the immune response and consequently the clinical outcome of infection.

This current study exploited parasite-naïve Blackface lambs with diversity in their predicted genetic resistance to *T. circumcincta*, which were trickle-infected with L3 larvae to mimic natural infection [32]. This regime resulted in lambs with a range of resistance as assessed by adult worm counts, FEC and IgA levels. Previous studies with these sheep used digital gene expression (DGE) [24] and RT-qPCR [33] to conclude that both resistance (no FEC/high IgA) and susceptibility (high FEC/low IgA) are active responses to infection; and that the inflammatory lesions of the susceptible sheep are associated with differential activation of Th17 T cells. Consequently the aim of this project was to investigate genes and physiological pathways associated with the differential activation of the immune response linked to the different disease outcomes. These pathways are likely to contain candidate genes as potential selectable markers for resistance to *T. circumcincta* infection. However, in this new study we use the novel Affymetrix Ovine Gene 1.1 ST whole-genome array, based on the homologous Oar v2.0 assembly, and focus on gene and pathway identity in relation to resistance and susceptibility.

Materials and methods

Animals and experimental design

Fifty-five female Blackface lambs (10–13 weeks old), from a flock previously used for quantitative genetic and QTL analyses [23], were housed in worm-free conditions. Ten lambs were sham infected controls; 45 lambs were infected experimentally with ~2300 infective L3 *T. circumcincta* larvae three times a week for 12 weeks and sacrificed two days after the last infection. The sham-infected controls (C) were twins of lambs in the infected group. At *post mortem* ten infected lambs had no detectable adult worms in the total abomasal contents, while the other infected lambs had a range of adult worm counts up to 11 300. The lambs selected for analysis were chosen to maximize the power of detecting differential expression. Consequently, animals were ranked according to their infection levels [32]. The 7 most resistant lambs (R) had no detectable abomasal adult worms or faecal egg count (FEC), high IgA antibody levels and high body weight. The 7 most susceptible lambs (S) were those with the highest adult worm count (mean 6000, maximum 11 300), high FEC (mean 414, maximum 950), low IgA antibody levels and low body weight. Details of the animals, infection protocols, trait and population genetic analyses have been described previously [32,33]. Animal experiments were approved by University of Edinburgh Ethical Review Committee and conducted under an Animals (Scientific Procedures) Act 1986 Project Licence.

Sample collection and total RNA isolation

Abomasal (gastric) lymph nodes (ALN) were removed immediately post mortem and stored at -80°C in RNAlater (Ambion, Huntingdon, UK). Total RNA was isolated using the Ribopure Kit (Ambion) as described previously [32]. RNA quality and integrity were assessed using a RNA 6000 Nano LabChip on the Agilent 2100 Bioanalyzer and quantified using a NanoDrop ND-1000 spectrophotometer; all had an RNA Integrity Number of >7.5 .

Whole-transcript expression analysis and profiling

Primary transcriptome analysis was by Affymetrix Ovine Gene 1.1 ST Array. Sense-strand cDNA was generated from total RNA (500 ng) subjected to two rounds of amplification (Ambion® WT Expression Kit). The obtained cDNA was used for biotin labelling and fragmentation by Affymetrix GeneChip® WT Terminal Labelling and Hybridization kit (Affymetrix). Biotin-labelled fragments of cDNA (5.5 µg) were hybridized to Affymetrix Ovine Gene 1.1 ST Array plates using the appropriate Hyb-Wash-Scan protocol for this plate and the Gene Titan Hyb Wash Stain kit for the reagents (Affymetrix). After hybridization every array plate was washed and stained before the array plates were scanned by the Imaging Station

of GeneTitan System. Image generation and the resulting CEL files for analysis were produced in Affymetrix® GeneChip® Command Console® Software (AGCC) version 3.0.1. Initial QCs were performed in Expression Console. The obtained Affymetrix .CEL files were imported into the Genomics Suite software package version 6.13.0213 (Partek, St. Louis, MO, USA). The imported data were analysed at the gene-level, with exons summarized to genes, using the mean expression of all the exons of a gene. Background correction was carried out using the robust multiarray average (RMA) algorithm, with quantile normalization, median polish probe summarization, and log₂ probe transformation. Differentially expressed genes were identified by ANOVA, genes with a fold change > 1.5 or < -1.5, and a false discovery rate (FDR) > 0.05 were kept, calculated using the Benjamini–Hochberg method to adjust *P*-values [34]. Gene annotation was performed based on similarity scores in BLASTN comparisons against ovine or bovine sequences in GenBank.

Inflammatory cytokines & receptors RT2 profiler™ PCR array

Quantitative real-time RT-PCR (RT-qPCR) analysis was performed using the SABiosciences Cow Inflammatory Cytokines & Receptors RT2 Profiler™ PCR Array (Qiagen, Crawley, UK), which measures the expression of 84 genes that mediate the inflammatory response (Cat. no. 330231 PABT-011ZR). Total RNA was extracted as described above and treated with RNase-free DNase I (Qiagen) and RNeasy MinElute Cleanup Kit (Qiagen) according to the manufacturer's protocol to eliminate DNA contamination. Each 0.8 µg sample of RNA was reverse transcribed using a RT² First Strand Kit (Qiagen) before dilution with RNase-free water according to the manufacturer's protocol. A real time PCR was performed on each cDNA sample using the RT² Profiler™ PCR Array with the RT² SYBR Green ROX FAST Mastermix on a Rotor-Gene Q cycler (Qiagen). The cycling profile was performed at 95 °C for 10 min, followed by 40 cycles of 95 °C for 15 s and 60 °C for 1 min. Melting curve analysis of PCR products confirmed the absence of secondary product. RT² Profiler PCR Array Data Analysis v3.5 was used for data analysis. The data analysis was based on the $\Delta\Delta C_t$ method with gene expression normalized to the reference gene *YWHAZ*.

Cloning of ovine gene fragments

Amplicons from the RT² Profiler™ PCR Array were cloned and sequenced to confirm PCR primer specificity using the TOPO® TA Cloning® Kit for Sequencing (Life Technologies) and BigDye® Terminator v3.1 Cycle Sequencing Kit (Applied Biosystems) according to the manufacturer's instructions. Cloned amplicon sequences were used in BLASTN comparisons against ovine or bovine sequences in GenBank to confirm identity.

Illumina digital gene expression

Full details of the RNAseq methods and analysis have been described previously [24]. These sheep sequences were originally aligned against the Btau 4.0 bovine genome. Detailed protocols, metadata and all raw data are deposited at the ArrayExpress database [35] accession number E-MTAB-445. For the current study the raw data were reanalysed by alignment against the sheep genome assembly Oar v3.1 [36] using Bowtie v0.12.8 [37]. Only tags with phred mapping quality of at least 30, with a maximum of one base-pair mismatch and mapped to less than two genome locations were retained for further analysis. Furthermore, only genes that were mapped from five samples or more were included in the final analysis. Statistical analysis was performed using “R v2.15”, and Limma [38] within BioConductor 2.11 [39] was used to calculate the differential gene expression between resistant (R), susceptible (S) and control (C) groups, including fold change and *q* value, which is analogous to an adjusted *p* value or false discovery rate (FDR). Only genes with a fold change greater than 1.5 and *q* value ≤ 0.05 (FDR 5%) were annotated.

Molecular network and pathway analysis

The Ingenuity Pathways Analysis (IPA) Spring Release (2013) Software (Qiagen) was used to identify networks of interacting genes and other functional groups from the datasets of differentially-expressed genes. DEG was analysed, by uploading the HUGO Gene Nomenclature Committee (HGNC) gene symbols for the sheep orthologues and fold change data to IPA.

Results

Expression analysis by Affymetrix ovine gene array

All microarray data, metadata and protocols are available in the ArrayExpress database under accession number E-MTAB-1580. The Affymetrix Ovine Gene 1.1 ST Arrays identified 43 genes (Table 1) in the ALN that showed significant difference (fold change ≥ 1.5 and adjusted *p* value ≤ 0.05) in the R vs. C comparison, four genes in the S vs. C comparison and only three genes in the R vs. S comparison. All differentially-expressed genes in the S vs. C and R vs. S comparisons were also significantly differentially-expressed in the R vs. C comparison except *VIRP2* that was 2.04 fold increased in susceptible sheep compared to controls.

Presentation of these data by heat map (Figure 1) illustrates that the overwhelming majority of the differentially-expressed genes are increased in the infected groups. Forty-one of the 43 genes in the R vs. C comparison are increased in the R group; all four of the genes in the S vs. C comparison were increased in the S group and all three in the R vs. S comparison were increased in the R group. *IL13*, *COL6A5* and *ACTG2* were significantly increased in the R animals when compared to both the S and C groups.

Table 1 Differentially-expressed genes in ALN as assessed by Affymetrix ovine gene array.

Transcript	Accession number	Gene	R vs.S		R vs. C		S vs. C	
			<i>p</i> -value*	FC [§]	<i>p</i> -value*	FC	<i>p</i> -value*	FC
14836730	NM_001082594	IL13	7.44E-07	3.17	1.87E-08	4.76	0.0195	1.50
14863257	XM_004003413	COL6A5	8.64E-07	8.69	4.88E-07	10.47	0.5421	1.21
14722918	XM_004005214	CTNNA1	2.52E-06	1.45	4.03E-07	1.56	0.2107	1.08
14726591	XM_004003604	CHI3L2	0.1340	-1.15	8.18E-06	1.82	5.15E-07	2.10
14830831	XM_004018378	IL17RB	0.0061	1.78	3.13E-07	4.73	9.17E-05	2.66
14710165	M84356	IGHE	0.4861	1.30	9.63E-07	17.21	3.35E-06	13.25
14793854	XM_004020976	CCL26	3.37E-05	6.55	5.08E-07	15.50	0.0252	2.37
14806387	XM_004006081	ACTG2	2.09E-06	3.12	6.66E-06	2.94	0.7353	-1.06
14795035	XM_004018317	IL5RA	0.0031	1.64	6.59E-07	3.15	0.0004	1.92
14860591	XM_004008559	FCER2	0.3480	-1.09	1.08E-05	1.72	1.88E-06	1.87
14724715	NM_001142892	NFIL3	0.0241	1.21	1.76E-06	1.77	0.0002	1.46
14842210	AC150860	unknown	0.0002	1.95	3.49E-06	2.69	0.0422	1.38
14731097	XM_004021707	PDLIM3	0.0420	1.19	3.46E-06	1.74	0.0002	1.46
14780240	XM_004007330	IL1RL1	0.0001	2.09	5.90E-06	2.70	0.1112	1.29
14763982	XM_004015182	FFAR2	0.0002	1.70	6.95E-06	2.09	0.0921	1.23
14894439	NM_001009749	SELE	0.4637	1.09	4.34E-05	-1.88	1.03E-05	-2.05
14776999	XR_083707	EMR3	0.0006	4.02	6.48E-06	9.29	0.0278	2.31
14767454	XM_004011302	CD73	0.6156	1.04	1.76E-05	1.65	4.74E-05	1.58
14814624	XM_004021547	ANXA8	0.0470	1.47	7.46E-06	3.25	0.0005	2.22
14855554	XM_004018137	ASB2	0.1414	1.14	1.14E-05	1.72	0.0002	1.51
14826002	XM_004012071	CYSLTR2	0.0002	1.42	2.31E-05	1.56	0.2324	1.10
14826670	XM_004003026	APOD	0.0074	1.75	1.19E-05	3.21	0.0056	1.83
14872046	XM_004012573	P2RX1	9.97E-05	1.88	6.98E-05	1.97	0.7164	1.05
14724584	XM_004022410	IL13RA2	0.0019	2.34	1.92E-05	4.10	0.0331	1.75
14873273	XM_004002636	CD1A	0.0455	1.31	1.92E-05	2.15	0.0015	1.64
14722365	XM_004015563	CCL17	0.5259	1.15	4.54E-05	3.33	0.0002	2.90
14766308	XM_004002922	CD200R1	0.0134	2.48	1.99E-05	7.36	0.0054	2.97
14789329	XM_004004106	SLC28A3	0.0006	2.33	3.76E-05	3.15	0.1660	1.35
14894373	NM_001009251	LGALS14	0.0166	2.44	2.72E-05	7.25	0.0061	2.98
14789001	XM_004023684	SMPD3	0.0002	2.17	0.0001	2.30	0.7191	1.06
14854660	XM_004018529	HRH1	0.0032	1.31	3.40E-05	1.57	0.0365	1.20
14724104	XR_173262	ALOX15	0.0007	5.81	5.48E-05	10.68	0.1877	1.84
14768669	XM_004013559	SLC45A3	0.0003	1.50	9.12E-05	1.61	0.4658	1.07
14710170	AF024645	IGHA	0.0023	1.55	4.03E-05	2.01	0.0559	1.30
14809379	XM_004003929	COL6A2	0.0059	1.43	3.89E-05	1.93	0.0237	1.34
14773724	XM_004022514	CRLF2	0.0015	1.66	9.79E-05	2.03	0.1733	1.22
14894389	NM_001009425	CD1B	0.0031	1.54	9.02E-05	1.94	0.0921	1.26
14828762	NM_181018	CLCA3	0.0082	1.64	7.66E-05	2.43	0.0346	1.48
14713579	AC225835	CCL3L3	0.0391	1.23	7.62E-05	1.65	0.0076	1.34
14864484	XM_004022897	CD1B	0.0091	1.39	9.87E-05	1.79	0.0401	1.29
14710851	XM_004006654	NR1H4	0.0267	1.21	0.0001	1.51	0.0153	1.25

Table 1 Differentially-expressed genes in ALN as assessed by Affymetrix ovine gene array. (Continued)

14891746	XM_004012107	TRPC4	0.0128	1.35	0.0001	1.75	0.0324	1.30
14784733	XM_004015344	CABP5	0.0183	-1.25	0.0001	-1.56	0.0235	-1.25
14732131	XM_004008376	VIPR2	0.0420	-1.28	0.0010	1.59	1.27E-05	2.04

*P value with no FDR applied. ⁵FC; fold change. Bold; adjusted $p \leq 0.05$ after 5% FDA.

CHI3L2, *IGHE* and *FCER2* were significantly increased in both the R vs. C and S vs. C comparisons but not in the R vs. S comparison. *VIPR2* was the only gene significantly increased in the S animals and not in the R group when compared to uninfected controls.

RT-qPCR array validation

Validation of the Affymetrix gene arrays was performed using the SABiosciences Cow Inflammatory Cytokines & Receptors RT² Profiler™ PCR Array which consists of 84 key genes that mediate inflammation. This assay is optimized for bovine genes and data were obtained for 83 genes when used with sheep cDNA (Additional file 1). The mean sequence identity between these 83 bovine and ovine genes is 96% (minimum 91%, *IL27*; maximum 100%, *TNFSF13B*). Single distinct melt curves obtained for all genes, except for *NAMPT* (no data), in all samples confirmed the specificity of the assay. Furthermore, analysis of the sequences of ten sheep amplicons selected randomly (*CCL11*, *CXCL13*, *IL2RB*, *IL2RG*, *IL4*, *IL6R*, *IL13*, *IL16*, *PF4*, *TNFSF4*) and

produced using the assay primers, showed them to be 100% identical to sequences of the respective sheep homologues.

Table 2 identifies those genes showing ≥ 1.5 fold differential expression in the three comparisons. Three genes were significantly differentially expressed ($p \leq 0.05$) in the R vs. C comparison, the Th2 cytokines *IL4* and *IL13* were increased by 11.9 and 3.96 fold respectively and *MIP* was repressed by 2.16 fold, in resistant sheep. *IL4* (3.83 fold) and *IL13* (3.37 fold) were also significantly increased, and *CCL5* (2.43 fold), *CCL11* (2.11 fold), *CXCR1* (2.49 fold), *CXCR3* (2.25 fold) and *TNFSF10* (2.03 fold) were significantly repressed in the susceptible animals when compared to uninfected controls. In the comparison of the two infected groups the Th2 cytokines *IL5* (3.4 fold) and *IL13* (3.54 fold) were significantly increased and the chemokine *CCL5* (3.16 fold) was repressed in resistant sheep.

Spearman's rank correlation analysis of the fold changes calculated for all 83 genes in the R vs. C and S vs. C

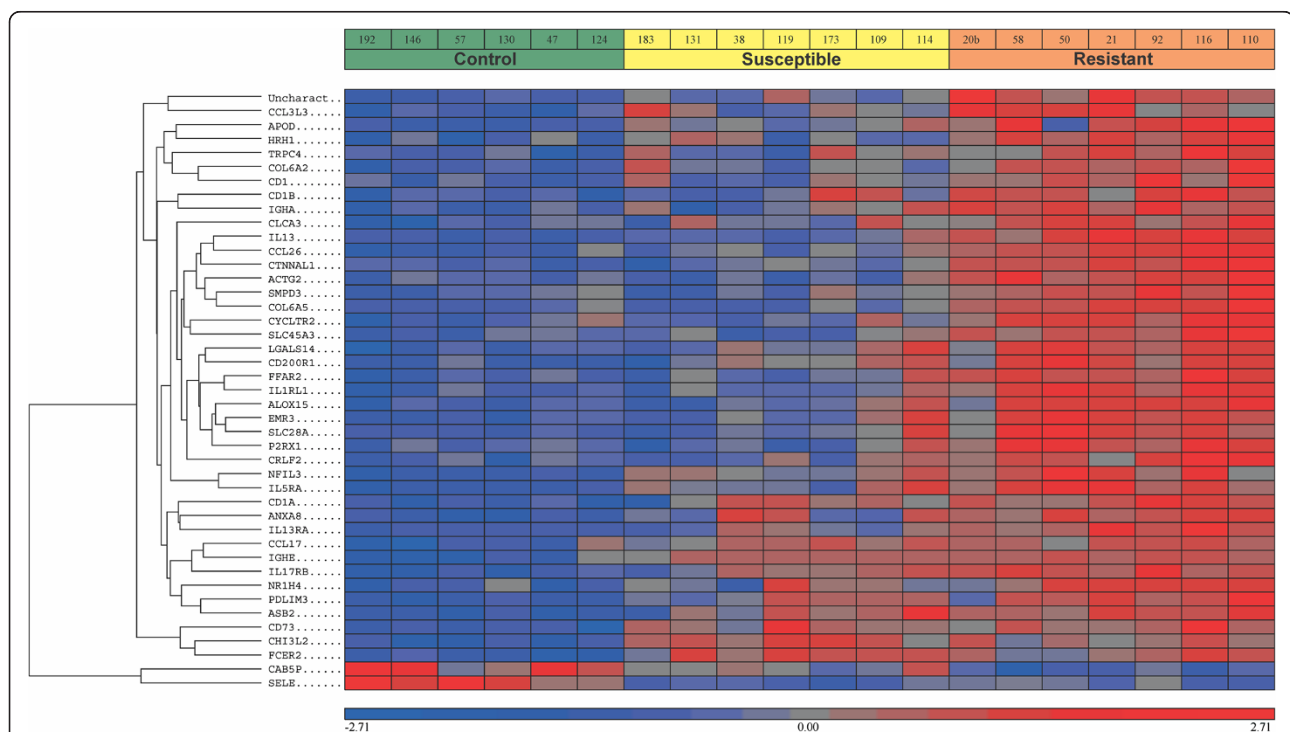


Figure 1 Heat map of differentially-expressed genes. Data from Affymetrix ovine gene array analysis showing changes in all genes identified as ≥ 1.5 fold and adjusted $p \leq 0.05$, in the three comparisons R vs. C, S vs. C and R vs. S (Table 1). Each row represents a gene. The relative levels of expression are represented by the intensity of colour; red, increased expression and blue decreased expression within each comparison.

Table 2 Differential expression of inflammatory cytokines and receptors in ALN as assessed by RT-qPCR.

Up-regulated genes	Fold change*	p-value	Down-regulated genes	Fold change	p-value
Resistant vs. Control					
IL4	3.96	0.006	AIMP1	-3.26	0.980
IL5	2.86	0.098	BMP2	-2.67	0.914
IL10RA	2.43	0.063	CCL20	-2.57	0.119
IL13	11.92	0.001	CXCL12	-7.28	0.297
IL17B	2.06	0.104	IL2RB	-4.33	0.135
IL9R	4.01	0.254	MIF	-2.16	0.020
			TNFSF4	-3.42	0.112
			VEGFA	-4.28	0.208
Susceptible vs. Control					
IL4	3.83	0.007	CCL5	-2.43	0.008
IL13	3.37	0.030	CCL11	-2.11	0.046
			CXCL10	-2.76	0.182
			CXCL12	-2.24	0.263
			CXCL9	-3.00	0.106
			CXCR1	-2.49	0.006
			CXCR3	-2.25	0.005
			IFNG	-2.14	0.135
			IL2RB	-4.71	0.100
			TNFSF10	-2.03	0.020
Resistant vs. Susceptible					
CCL5	3.16	0.030	AIMP1	-2.90	0.773
CCR2	2.58	0.185	CXCL12	-3.26	0.823
CXCL9	2.92	0.165	TNFSF4	-2.13	0.424
CXCL10	3.07	0.099	VEGFA	-2.77	0.797
IFNG	2.16	0.129			
IL5	3.40	0.045			
IL13	3.54	0.002			
IL17B	2.71	0.061			
IL9R	3.77	0.200			

*Fold change is the ratio of normalized mean expression between resistant, susceptible and control groups. Bold is $p \leq 0.05$.

comparisons (comparing 164 values) gave a low, but highly significant positive correlation ($\rho = 0.37$, $P < 0.0001$) between the data obtained by the Affymetrix and PCR arrays. A direct comparison of quantitative expression of eight selected genes (Figure 2) shows the close relationship between the relative levels of expression measured by the two independent methods.

Ingenuity pathway analysis

IPA was used to help characterize how individual differentially-expressed genes interact, and consequently influence biological processes that affect the development

of resistance or the maintenance of susceptibility to chronic *T. circumcincta* infection. Analysis of the data obtained using the Affymetrix gene array identified seven networks (Table 3), five with the R vs. C comparison and one each with the S vs. C and R vs. S comparisons. The top two ranked networks for the R vs. C dataset were Humoral Immune Response, Protein Synthesis, Inflammatory Response (Figure 3) and Hematological System Development and Function, with P-scores of 48 and 28 respectively. The three top Bio Functions, beyond the $p \leq 10^{-10}$ threshold, within these networks (Table 4a) were Immunological Disease with 24 genes with the highest p value of 2.73×10^{-13} , Inflammatory Disease with 41 genes $p = 8.34 \times 10^{-13}$, and Hypersensitivity Response with 19 genes $p = 7.98 \times 10^{-11}$ associated with Diseases and Disorders and Hematological System Development and Function with 37 genes $p = 4.79 \times 10^{-12}$, Tissue Morphology with 33 genes $p = 4.79 \times 10^{-12}$, and Humoral Immune with 13 genes $p = 2.28 \times 10^{-11}$, associated with Physiological System Development and Function.

The network Cell-To-Cell Signaling and Interaction, Hematological System Development and Function, Immune Cell Trafficking with a P score of 24 was the only network identified for the S vs. C dataset (Table 4b); and Antigen Presentation, Lipid Metabolism, Small Molecule Biochemistry with a P score of 18 was identified for the R vs. S comparison. Within these networks there were no Bio Functions beyond the 10^{-10} threshold (Table 4c).

The most significant network was Humoral Immune Response, Protein Synthesis, Inflammatory Response (R vs. C comparison), with *IL13* as the central gene (Figure 2). *IL13* was the top ranked gene in the R vs. C comparison, up-regulated 3.17 fold ($p = 7.44 \times 10^{-7}$) in resistant sheep. This was confirmed by the RT-qPCR analysis where it was 11.92 fold ($p = 0.001$) increased in the resistant group (Table 2). In this analysis it was also significantly up-regulated in susceptible animals in the S vs. C comparison (3.37 fold $p = 0.03$) and consequently 3.54 fold increased in resistant vs. susceptible sheep ($p = 0.002$).

Mapping of sequencing tags to the sheep Oar v3.1 genome assembly

A previous study [24] also performed transcriptome analysis on the abomasal lymph nodes of these resistant and susceptible sheep using Illumina digital gene expression analysis. These data were originally analysed in relation to the *Bos taurus* genome assembly (Btau4.0). Here, we reanalysed the same primary data (ArrayExpress E-MTAB-445) against the most recent *Ovis aries* genome assembly (Oar v3.1) to obtain more accurate gene mapping. The mean total number of reads of the samples from 15 sheep (5 resistant, 5 susceptible and 5 control) was 1 473 000, of which 288 753 mapped to Btau4.0, with a maximum of 1 mismatch from an average tag length of 17

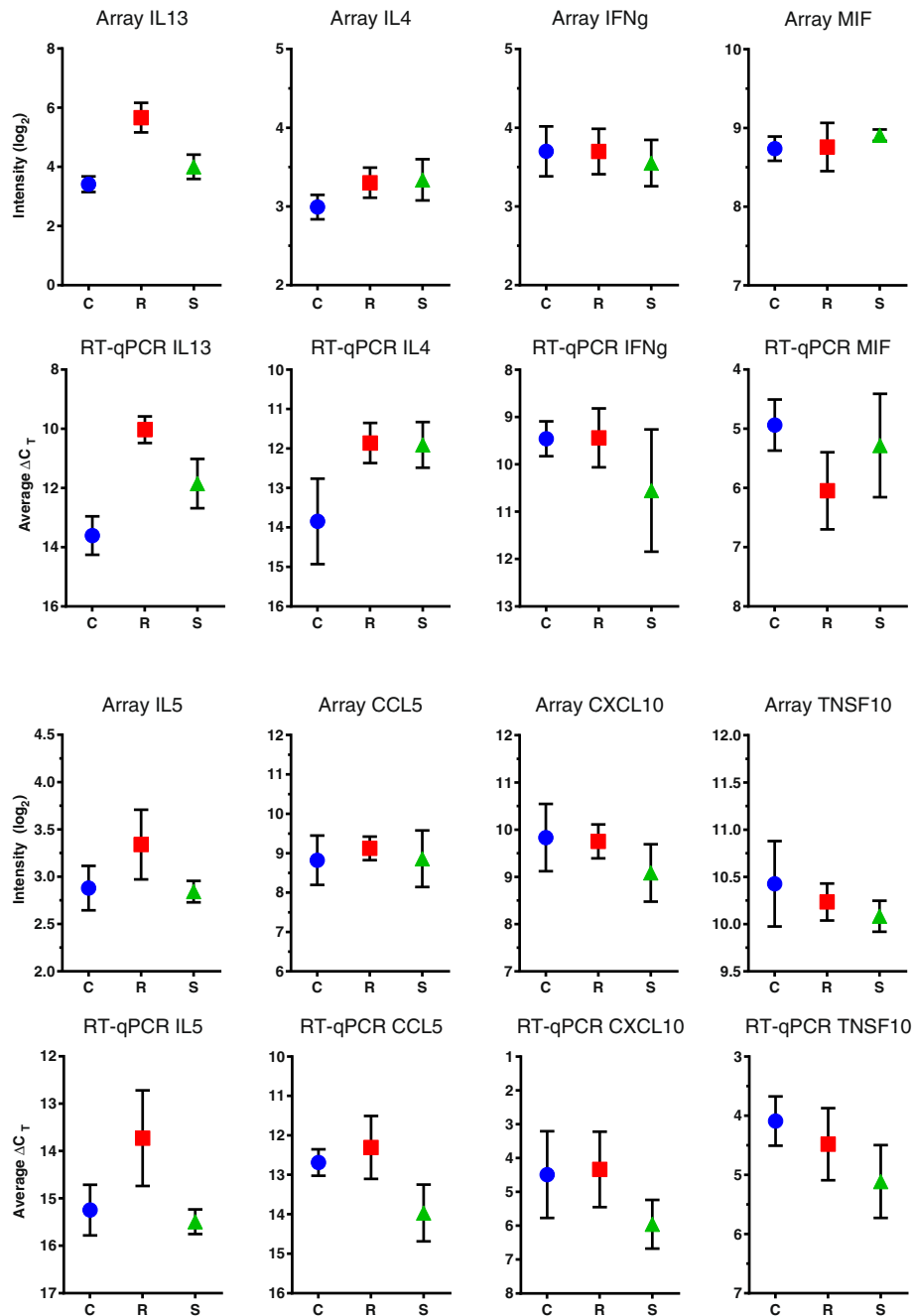


Figure 2 Comparison of Affymetrix ovine gene and PCR arrays. PCR array results shown are the average ΔC_T for the gene of interest (GOI) calculated using the following formula $\Delta C_T = C_T^{(GOI)} - C_T^{(WHAZ)}$ and error bars show the standard deviation. The microarray values plotted are the mean normalized \log_2 intensity values. Blue circles represent the control (C); red squares resistant (R) and green triangles susceptible (S) samples.

bases; in contrast 865 844 tags mapped the Oar v3.1. A ~2-4 fold increase in the number of significantly differentially expressed genes (Additional file 2) was also noted when comparing Oar v3.1 to Btau4.0; 229 in Oar v3.1 and 131 in Btau4.0 in the R vs. C comparison, 150 and 37 in the S vs. C comparison, and 146 and 83 in the R vs. S comparison.

IPA analysis of the revised digital gene expression data identified the top two networks (Additional file 3) in the R vs. C comparison as Cellular Growth and Proliferation, Cell Morphology, Cell-mediated Immune Response with a *P*-score of 56 and Post-Translational Modification, Hematological Disease, Cell Cycle, *P*-score of 52. The top network in the S vs. C comparison was Post-Translational

Table 3 Top networks identified by ingenuity pathway analysis, from the Affymetrix ovine gene array.

Resistant vs. Control	Score
Humoral Immune Response, Protein Synthesis, Inflammatory Response	48
Haematological System Development and Function, Haematopoiesis, Tissue Morphology	28
Cardiovascular System Development and Function, Cellular Movement, Gene Expression	22
Hereditary Disorder, Skeletal and Muscular Disorders, Tissue Morphology	21
Cell Signalling, Molecular Transport, Vitamin and Mineral Metabolism	20
Susceptible vs. Control	
Cell-To-Cell Signalling and Interaction, Haematological System Development and Function, Immune Cell Trafficking	24
Resistant vs. Susceptible	
Antigen Presentation, Lipid Metabolism, Small Molecule Biochemistry	18

Modification, Cell Signaling, DNA Replication, Recombination, and Repair with a P-score of 54. The top Bio Functions (Additional file 4) within these networks include Cancer, Gastrointestinal Disease, Dermatological Disease and Conditions and Immunological Disease; however, none of these Bio Functions reached the $p \leq 10^{-10}$ threshold.

Discussion

This project is the logical extension of our three previous studies [24,32,33] concerned with the genetics and

immunology of resistant and susceptible Blackface sheep persistently infected with the common abomasal nematode parasite, *T. circumcincta*. The first [32] described host-parasite interactions in a single intensively-phenotyped cohort with variable susceptibility; which were exploited to help analyse the nature of the mature host response associated with differential resistance [24,33]; although this misses early events associated with the development of immune responses. The aim of the current study was to identify genes and physiological pathways associated with the differential activation of the immune response, linked

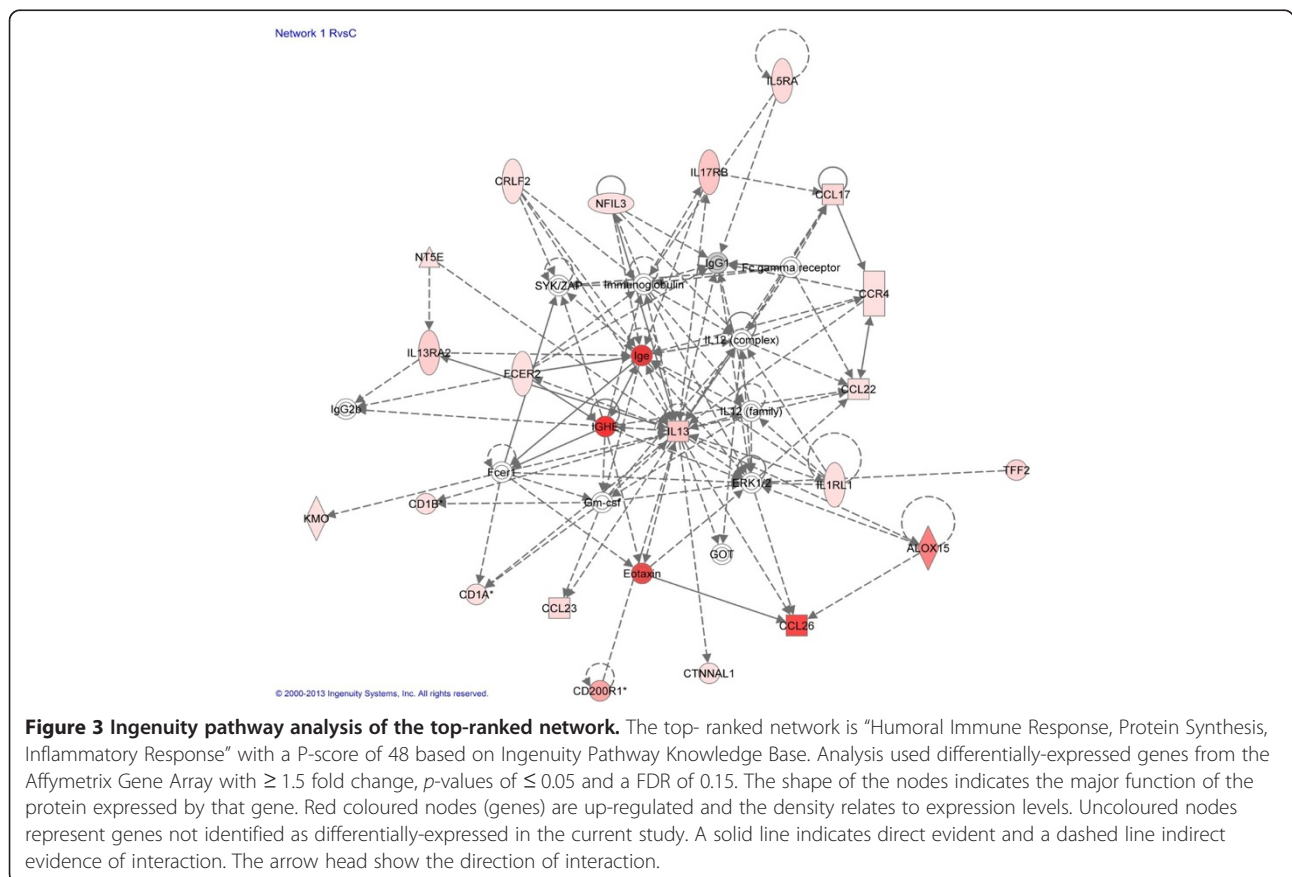


Table 4 Top bio functions identified by ingenuity pathway analysis, from the Affymetrix ovine gene array.

a. R vs. C comparison	
DISEASES AND DISORDERS	P-value
Immunological Disease	
CSF3R, SELE, PTGDR2, IL1RL1, IGHE, VIPR2, CCL23, NR1H4, IL13RA2, CCL17, CCL22, IL13, ADRA1D, HRH1, IL17RB, CCR4, CCL2, NLRP12, CD1A, CCL26, CFH,HRH4, CYSLTR2, FCER2.	2.73×10^{-13} - 6.71×10^{-03}
Inflammatory Response	
GATA1, CRLF2, NR1H4, VIPR2, IL1RL1, IL13RA2, SOCS2, P2RX1, CCL17, SLC9A4, CCL22, HRH1, NFIL, TFF2, CCL2, CD1A, HPGD, CFH, CYSLTR2, FCER2, CSF3R, ALOX15, SELE, PTGDR2, IL5RA, CCL23, IGHE, CD200R1, CD1B, ULBP1, P2RX7, IL13, IL17RB, CCR4, NT5E, NLRP12, PILRA, CCL26, IGHA1, SH2D1B, HRH4.	8.34×10^{-13} - 6.71×10^{-03}
Hypersensitivity Response	
ALOX15, PTGDR2, SELE, IL5RA, GATA1, VIPR2, IL1RL1, IGHE, CD200R1, CCL17, CCL22, P2RX7, IL13, IL17RB, CCR4, CCL2, CCL26, HRH4, FCER2	7.98×10^{-11} - 4.94×10^{-03}
Dermatological Diseases and Conditions	
ALOX15, PTGDR2, SELE, IGHE, VIPR2, NR1H4, CCL23, CCL17, CCL22, IL13, ADRA1D, HRH1, IL17RB, CCL2, CCR4, NT5E, CD1A, HPGD, HRH4, CYSLTR2, FCER2	1.78×10^{-09} - 6.71×10^{-03}
Inflammatory Disease	
CRLF2, NR1H4, IL1RL1, VIPR2, IL13RA2, CCL17, CCL22, HRH1, TH, COL6A1, CCL2, CD1A, HPGD, CFH, CYSLTR2, FCER2, CSF3R, ALOX15, SELE, PTGDR2, IL5RA, CCL23, IGHE, CD200R1, P2RX7, IL13, ADRA1D, GLIPR2, IL17RB, CCR4, NT5E, NLRP12, CCL26.	1.78×10^{-09} - 5.7×10^{-03}
PHYSIOLOGICAL SYSTEM DEVELOPMENT AND FUNCTION	P-value
Haematological System Development and Function	
GATA1, CRLF2, VIPR2, IL1RL1, SOCS2, IL13RA2, P2RX1, CCL17, CCL22, HRH1, NFIL3, TFF2, CCL2, CD1A, CFH, CYSLTR2, FCER2, CSF3R, ALOX15, PTGDR2, SELE, IL5RA, IGHE, CCL23, CD200R1, CD1B, ULBP1, P2RX7, IL13, ZBTB32, IL17RB, CCR4, NLRP12, NT5E, MYOCD, CCL26, CYP4A11.	4.79×10^{-12} - 6.71×10^{-03}
Tissue Morphology	
GATA1, CRLF2, VIPR2, IL1RL1, NR1H4, IL13RA2, SLC9A4, CCL22, TH, HRH1, NFIL3, TFF2, CCL2, CFH, SMPD3, FCER2, CSF3R, ALOX15, SELE, PTGDR2, IL5RA, IGHE, CD200R1, P2RX, IL13, OXT, IL17RB, CCR4, NLRP12, NT5E, FLNC, CNN1, CYP4A11.	4.79×10^{-12} - 6.49×10^{-03}
Humoral Immune Response	
HRH1,PTGDR2, NFIL3, IL5RA, IL17RB, CRLF2, CCR4, IGHE, IL1RL1, IL13RA2, IL13, HRH4, FCER2.	2.28×10^{-11} - 6.53×10^{-03}
Immune Cell Trafficking	
IL1RL1, VIPR2, SOCS2, CCL17, CCL22, HRH1, NFIL3, TFF2, CCL2, CD1A, CFH, CYSLTR2, FCER2, CSF3R, ALOX15, PTGDR2, SELE, IGHE, CCL23, CD200R1, ULBP1, CD1B, P2RX7, IL13, IL17RB, CCR4, NT5E, NLRP12, CCL26.	5.04×10^{-10} - 6.71×10^{-03}
Cell-mediated Immune Response	
PTGDR2, SELE, GATA1, CCR4, CCL2, IL1RL1, CCL23, IL13RA2, CCL17, CCL22, IL13.	1.09×10^{-08} - 5.63×10^{-03}
Lymphoid Tissue Structure and Development	
CSF3R, ALOX15, SELE, GATA1, CRLF2, IL1RL1, IL13RA2, CCL17, CCL22, P2RX7, IL13, CCL2, CCR4, NT5E, CYSLTR2	3.82×10^{-07} - 5.7×10^{-03}
Digestive System Development and Function	
TFF2, NR1H4, IL13RA2, SLC9A4, IL13	2.41×10^{-05} - 4.94×10^{-03}
b. S vs. C comparison	
DISEASES AND DISORDERS	P-value
Hypersensitivity Response	
FCER2, IGHE, SELE, VIPR2.	1.76×10^{-06} - 3.31×10^{-02}
Inflammatory Disease	
FCER2, IGHE, IGKC, NT5E, SELE, VIPR2	4.64×10^{-05} - 4.10×10^{-02}
PHYSIOLOGICAL SYSTEM DEVELOPMENT AND FUNCTION	P-value
Hematological System Development and Function	
FCER2, IGHE, IGKC, SELE, NT5E, VIPR2.	1.76×10^{-06} - 4.57×10^{-02}

Table 4 Top bio functions identified by ingenuity pathway analysis, from the Affymetrix ovine gene array. (Continued)

Immune Cell Trafficking	
FCER2, IGHE, NT5E, SELE, VIPR2.	1.76 × 10 ⁻⁰⁶ - 4.57 × 10 ⁻⁰²
c. R vs. S comparison	
DISEASES AND DISORDERS	P-value
Gastrointestinal Disease	
CCL26, IL13.	9.85 × 10 ⁻⁰⁶ - 2.62 × 10 ⁻⁰²
Hematological Disease	
CCL26, CD1A, IL13, FCER2, IGHE, IGKC, NT5E, SELE, VIPR2.	9.85 × 10 ⁻⁰⁶ - 2.62 × 10 ⁻⁰²
PHYSIOLOGICAL SYSTEM DEVELOPMENT AND FUNCTION	
Hematological System Development and Function	
CCL26, CD1A, IL13.	2.35 × 10 ⁻⁰⁵ - 4.76 × 10 ⁻⁰²
Immune Cell Trafficking	
CCL26, CD1A, IL13.	2.35 × 10 ⁻⁰⁵ - 4.76 × 10 ⁻⁰²

to the maintenance of resistance and susceptibility. It is part of a larger project that eventually aims to identify candidate genes that could be used as selectable markers of resistance in these Blackface sheep as well as other commercial sheep breeds.

The study exploits a new genomics resource for the analysis of the sheep transcriptome; the homologous Affymetrix Gene 1.1 ST Array based on the *Ovis aries* Oar v2 genome assembly. This consists of 508 538, 25mer probes for 22 047 genes, which interrogate approximately 625 bases per gene covering all exons of each transcript. Also new to this study is the use and validation of the SABiosciences Cow Inflammatory Cytokines & Receptors RT² Profiler™ PCR Array in sheep; enabling 83 RT-qPCR assays to be used to validate the arrays rather than the more usual 8 or 10 genes. In addition we reanalysed first generation Illumina digital gene expression data [24] using the latest sheep genome assembly (Oar v3.1) with significantly different results; more than 3 times the number of tags mapped to Oar v3.1 as originally mapped to Btau 4.0. The only other study [40] that has examined the sheep ALN transcriptome used a small array of 1480 annotated probes with 5373 unannotated expressed sequence tags. This identified only one differentially expressed gene (*HSPA1A*) in relation to *H. contortus* infection.

The sheep in this study that were predicted to show variation in resistance to *T. circumcincta* were trickle-infected regularly for 3 months to mimic natural infection and continual exposure. They were analysed when the mature immune response of the resistant animals had controlled and/or eliminated that infection. At the same time susceptible animals did not control infection, and retained adult nematodes that produced large numbers of eggs [32]. A previous study showed that these susceptible sheep generated an active Th17 immune and

inflammatory response that failed to control infection [33]. In this current study the results of the array analysis focused on the nature of the mature host response in the resistant animals, which controls nematode colonization despite chronic exposure to infectious larvae.

Murine models of nematode parasite immunity, resistance and susceptibility, using the nematodes *Heligmosomoides polygyrus*, *Nippostrongylus brasiliensis* and *Trichuris muris* are linked to strong Th2 responses, indicated by high levels of the cytokines interleukin 4 (IL4) and IL13 with parasite immunity and resistance, and high levels of interferon γ (IFN γ) with susceptibility [41-43]. It is clear from the IPA in this study that the host response linked to parasite control is strongly associated with the network "Humoral Immune Response, Protein Synthesis, Inflammatory Response" and that many of the network genes are key regulators of a Th2 cell response and are strongly up-regulated in the resistant sheep. This is in agreement with the results from the array analysis of the mucosa from challenge-treated-reinfected "immune" sheep [29]. IL4 and IL13 are the two cytokines that principally control Th2 differentiation [44,45]; both were significantly increased in resistant sheep, *IL4* (3.96 fold in R vs. C) in the RT-qPCR and *IL13* in both array (4.76 fold in R vs. C and 3.17 fold in R vs. S) and RT-qPCR (11.92 fold in R vs. C and 3.54 in S vs. C). These cytokines have related receptors and *IL13RA2* is also up-regulated in resistant sheep; binding to their cognate receptors stimulates the activation of STAT6 that controls the expression of GATA3, the prime transcription factor for Th2 differentiation [46]. IL5 is the third archetypal Th2 cytokine, and is also increased in resistant sheep (3.4 fold in R vs. S by RT-qPCR). A major function of IL5 is in stimulating eosinophil maturation and localization; these are crucial

effector cells in the exclusion of *T. circumcincta* through binding to parasite-specific IgG, IgE and IgA antibodies and subsequent degranulation [13]. Eosinophils are most numerous in the mucosa of the resistant sheep [47] evidenced by the increased expression, by array, of both *FCER2* (1.72 fold in R vs. S) the low affinity receptor of IgE, and the IL5 receptor (*IL5RA* 3.15 fold in R vs. C) both expressed by eosinophils (Table 1).

Sheep control larval colonization, worm development and egg production through the generation of parasite-specific IgA and IgE antibodies [7,9,11,20]. Levels of these two antibody classes are highly negatively correlated with worm length and fecundity and FEC [32] and both IgA (*IGHA* 2.01 fold) and IgE (*IGHE* 17.21 fold) are significantly increased (both by array) in the resistant sheep. The generation of Th2 responses in the gastrointestinal tract seem to be induced by the events at the mucosal epithelial surface [48]. The intestinal epithelium is activated by parasite antigens via innate receptors and secrete the cytokines IL25 and IL33 that act on the newly identified innate lymphoid cells (ILC2) [49], and TSLP that acts on dendritic cells (DC) [50]. This leads to IL13 expression by ILC2 and Th2 activation by the DCs. Major parts of the receptors for these cytokines are up-regulated (by array) in resistant sheep; *IL17RB* (receptor for IL25) is increased 4.73 fold, *IL1RL1* (IL33 receptor and the principal marker for ILC2) is increased 2.7 fold and *CRLF2* (TSLP receptor) is increased 2.03 fold, in the R vs. C comparison. The endothelia and DCs in the abomasal lymph nodes of resistant sheep express significantly increased levels of *HRH1* (1.57 in R vs. C). Histamine receptor positive DCs modulate Th1/Th2 balance by inhibiting IL12R1 signalling thus promoting Th2 responses [51].

However, resistance and susceptibility is not just a matter of Th1/Th2 discrimination as susceptible sheep also show increased expression of *IL4* (3.83 fold in S vs. C) and *IL13* (3.37 fold in S vs. C) by RT-qPCR and *IGHE* (13.25 fold in S vs. C) by array. *IGHA* is only marginally increased (but non-significant) in these susceptible animals. Nevertheless the mature tissue response of the resistant and susceptible sheep is distinct [33]. The abomasal mucosa of resistant sheep, at least 6 weeks after the last positive FEC, has evidence of only minor pathological change with small numbers of infiltrating lymphocytes and eosinophils. In contrast the mucosa of susceptible sheep was grossly inflamed.

These pathological differences are reflected in the differential expression of the chemokines, molecules which control leukocyte movement. The high expression of *CCL17* (3.33 fold in R vs. C in array) and *CCL26* or eotaxin-3 (15.5 fold in R vs. C in array) begins to explain the nature of mucosal infiltrate of resistant sheep, which consists largely of lymphocytes and eosinophils [52,53].

Indeed *CCL17* is chemotactic for, and activates, CCR4+ Th2 cells; their expression of IL4 and IL13 stimulates the expression of *CCL26*, which is chemotactic for eosinophils and basophils. IL13 also stimulates the expression of *CCL5* (*CCL5* 3.15 fold in R vs. C in RT-qPCR) by activated T and NK cells, which is chemotactic for memory T cells and promotes Th2 responses [54].

Changes to these and many of the other genes indicate that a principal component of the response of resistant animals also includes a repression of acute inflammation and tissue healing. The low levels of *MIF* (-2.16 in R vs. C in array) and *SELE* (-1.8 in R vs. C in array) begins to explain the paucity of neutrophils in resistant animals [55]. A principal function of MIF is induction of pro-inflammatory cytokines, which stimulates *SELE* (E-selectin) expression and hence neutrophil localization [56]; however the level of *SELE* in resistant sheep is significantly repressed, possibly explaining the lack of neutrophils in the abomasal mucosa of these animals [33]. Three other genes which play significant roles in the regulation of inflammation are increased in resistant sheep. *ALOX15* (lipoxygenase 15) is induced by IL4 and IL13 and inhibits pro-inflammatory leukotrienes and suppresses neutrophil chemotaxis; *NR1H4* plays a key role in cholesterol homeostasis and inhibits IL1 β induced inflammation [57]; *CD200R* is the Ox-2 receptor expressed on myeloid cells and functions to down-regulate myeloid cell activation and therefore depress inflammation [58]. Both resistant and susceptible sheep are equally affected for the first 6 weeks of trickle infection [32] but only resistant animals control infection. Consequently the abomasum of those animals begins to heal; and this is seen by the significant changes (R vs. S and R vs. C) to genes associated with healing, with an 8 – 10 fold increase in type VI collagen (*COL6A5*) and a 3 fold increase in enteric smooth muscle actin (*ACTG2*).

VIPR2 (2.04 in S vs. C) is the one gene in the array that is differentially-expressed in susceptible sheep but not in the resistant group. This is the vasoactive intestinal peptide receptor; ligand-receptor interactions leads to inhibition of IL2-driven T cell proliferation and chemoattraction [59], consistent with the immunopathology of the susceptible abomasum. The excretory/secretory antigens of *T. circumcincta* have been shown to induce the expression of FoxP3 by murine T cells in vitro [60]; however there is no evidence for any increase in Tregs in the parasite-free resistant or highly-infected susceptible sheep.

The ultimate aim of these studies was to identify candidate genes as potential selectable markers for resistance to *T. circumcincta* infection. Within this study we have highlighted a small number of physiological pathways associated with differential susceptibility in Black-face sheep; in particular identified genes linked to

differential T cell polarization. The Affymetrix ovine gene array incorporates probes for all the annotated exons within the sheep genome and a major advantage of using this technology is that differential transcript usage can be identified directly. We are currently analysing the array data to identify transcript variants of genes within the top-networks that are differentially-expressed in relation to resistance and susceptibility.

Additional files

Additional file 1: Digital gene expression analysis of gastric lymph node of *T. circumcincta* infected sheep. Differentially expressed genes in the R vs. C, S vs. C and R vs. S comparisons analysed using the *Ovis aries* Oar v3.1 genome assembly. Mean; $\Delta\Delta Ct$ (mean Ct^{GOI} - mean Ct^{YWHAZ}).

Additional file 2: RT-qPCR analysis of gastric lymph node of *T. circumcincta* infected sheep. Differentially expressed genes in the R vs. C and S vs. C comparisons. Mean R, S, C; mean tag numbers per 10^6 tags in Resistant (R), Susceptible (S), Control (C). FC R/C, S/C, R/S; fold change Resistant vs. Control (R/C), Susceptible vs. Control (S/C, Resistant vs. Susceptible (R/S).

Additional file 3: Top networks identified by Ingenuity Pathway Analysis, from the Illumina digital gene expression data. Network P -scores $[-\log_{10}(P\text{-value})]$ is the probability of a network being randomly generated.

Additional file 4: Top Bio Functions identified by Ingenuity Pathway Analysis, from Illumina digital gene expression data. P -values calculated by Fisher's exact test.

Competing interests

The authors declare that they have no competing interests.

Authors' contributions

JH conceived the study, collected the samples and is the principal investigator. AGG and JH designed the current experiments; AGG performed the Affymetrix and RT-qPCR experiments and was responsible for the statistical, bioinformatic and pathway analysis. DB performed the original digital gene expression study, including the bioinformatics. HW and AJ reanalyzed the digital gene expression in relation to Oar v3.1. JH drafted the manuscript. All the authors have read and approved the final manuscript.

Acknowledgements

This project was funded initially by the Natural Environment Research Council (NERC) through its "Post-Genomics and Proteomics" programme (grant NE/D000645/1) and subsequently by the Biotechnology and Biological Sciences Research Council (BBSRC) Institute Strategic Programme Grant to The Roslin Institute. HW is a BBSRC Industrial CASE scholar, sponsored by Sheep Improved Genetics Ltd and Eblex (grant BB/J012653/1). AJ acknowledges funding from the 3SR project (Sustainable Solutions for Small Ruminants) - 7th Framework Programme, call identifier FP7-KBBE-2009-3, Project 245140. We thank Professor Josephine Pemberton (Institute of Evolutionary Biology, University of Edinburgh) and Dr Dario Beraldi (CRUK, Li Ka Shing Centre, Cambridge) for original collaboration on the larger project and critical appraisal of the manuscript; Joan Docherty (The Marshall Building) for animal husbandry and collection of weight data and blood samples; Barbara Craig for the original parasitological measurements; staff at Genepool and ARKGenomics for help with the RNAseq and Affymetrix respectively.

Received: 21 May 2013 Accepted: 2 August 2013

Published: 8 August 2013

References

1. Brunsdon RV: The economic impact of nematode infection in sheep: implications for future research and control. In *The economic importance of parasites of livestock in New Zealand*. Edited by Heath ACG. New Zealand: New Zealand Society for Parasitology; 1988:4-16.
2. Urquhart GM, Armour J, Duncan JL, Dunn AM, Jennings FW: *Veterinary Parasitology*. Avon: Longman Scientific and Technical; 1987.
3. Coles GC, Jackson F, Pomroy WE, Prichard RK, von-Samson-Himmelstjerna G, Silvestre A, Taylor MA, Vercruyse J: The detection of anthelmintic resistance in nematodes of veterinary importance. *Vet Parasitol* 2006, **136**:167-185.
4. Sargison ND, Scott PR, Wilson DJ, Macrae AI, Penny CD: Teladorsagia circumcincta resistance to moxidectin and multiple anthelmintic groups in ewes following use of the persistent drug before lambing. *Vet Rec* 2010, **167**:523-527.
5. Cooper K, Whyte M, Danaher M, Kennedy D: Emergency slaughter of casualty cattle increases the prevalence of anthelmintic drug residues in muscle. *Food Addit Contam Part A Chem Anal Control Expo Risk Assess* 2012, **29**:1263-1271.
6. Eady SJ, Woolaston RR, Barger IA: Comparison of genetic and nongenetic strategies for control of gastrointestinal nematodes of sheep. *Livest Prod Sci* 2003, **81**:1-23.
7. Stear MJ, Strain S, Bishop SC: Mechanisms underlying resistance to nematode infection. *Int J Parasitol* 1999, **29**:51-56.
8. Stear MJ, Strain S, Bishop SC: How lambs control infection with *Ostertagia circumcincta*. *Vet Immunol Immunopathol* 1999, **72**:213-218.
9. Smith WD, Jackson F, Jackson E, Graham R, Williams J, Willadsen SM, Fehilly CB: Transfer of immunity to *Ostertagia circumcincta* and IgA memory between identical sheep by lymphocytes collected from gastric lymph. *Res Vet Sci* 1986, **41**:300-306.
10. Halliday AM, McAllister HC, Smith WD: Kinetics of the local immune response in the gastric lymph of lambs after primary and challenge infection with *Teladorsagia circumcincta*. *Parasite Immunol* 2010, **32**:81-90.
11. Murphy L, Eckersall PD, Bishop SC, Pettit JJ, Huntley JF, Burchmore R, Stear MJ: Genetic variation among lambs in peripheral IgE activity against the larval stages of *Teladorsagia circumcincta*. *Parasitology* 2010, **137**:1249-1260.
12. Huntley JF: Mast cells and basophils: a review of their heterogeneity and function. *J Comp Pathol* 1992, **107**:349-372.
13. Henderson NG, Stear MJ: Eosinophil and IgA responses in sheep infected with *Teladorsagia circumcincta*. *Vet Immunol Immunopathol* 2006, **112**:62-66.
14. Stear MJ, Bishop SC, Doligalska M, Duncan JL, Holmes PH, Irvine J, McCririe L, McKellar QA, Sinski E, Murray M: Regulation of egg production, worm burden, worm length and worm fecundity by host responses in sheep infected with *Ostertagia circumcincta*. *Parasite Immunol* 1995, **17**:643-652.
15. Shaw R, Morris C, Wheeler M, Tate M, Sutherland I: Salivary IgA: a suitable measure of immunity to gastrointestinal nematodes in sheep. *Vet Parasitol* 2012, **186**:109-117.
16. Sayers G, Sweeney T: Gastrointestinal nematode infection in sheep—a review of the alternatives to anthelmintics in parasite control. *Anim Health Res Rev* 2005, **6**:159-171.
17. Mugambi J, Bain R, Wanyangu S, Ihiga M, Duncan J, Murray M, Stear M: Resistance of four sheep breeds to natural and subsequent artificial *Haemonchus contortus* infection. *Vet Parasitol* 1997, **69**:265-273.
18. Terefe G, Lacroux C, Andreoletti O, Grisez C, Prevot F, Bergeaud JP, Penicaud J, Rouillon V, Gruner L, Brunel JC, Francois D, Bouix J, Dorchies P, Jacquiet P: Immune response to *Haemonchus contortus* infection in susceptible (INRA 401) and resistant (Barbados Black Belly) breeds of lambs. *Parasite Immunol* 2007, **29**:415-424.
19. Sayers G, Good B, Hanrahan JP, O'Donovan J, Mulcahy G, Sweeney T: Breed differences in mucosal and systemic antibody response to nematode infection in sheep: an important role for IgE? *Parasitology* 2008, **135**:71-80.
20. Gasbarre LC, Leighton EA, Sonstegard T: Role of the bovine immune system and genome in resistance to gastrointestinal nematodes. *Vet Parasitol* 2001, **98**:51-64.
21. Dominik S: Quantitative trait loci for internal nematode resistance in sheep: a review. *Genet Sel Evol* 2005, **37**(Suppl 1):S83-S96.
22. Stear MJ, Abuagob O, Benothman M, Bishop SC, Innocent G, Kerr A, Mitchell S: Variation among faecal egg counts following natural nematode infection in Scottish Blackface lambs. *Parasitology* 2006, **132**:275-280.
23. Davies G, Stear MJ, Benothman M, Abuagob O, Kerr A, Mitchell S, Bishop SC: Quantitative trait loci associated with parasitic infection in Scottish blackface sheep. *Heredity* 2006, **96**:252-258.
24. Pemberton JM, Beraldi D, Craig BH, Hopkins J: Digital gene expression analysis of gastrointestinal helminth resistance in Scottish blackface lambs. *Mol Ecol* 2011, **20**:910-919.

25. Slate J, Gratten J, Beraldi D, Stapley J, Hale M, Pemberton JM: **Gene mapping in the wild with SNPs: guidelines and future directions.** *Genetica* 2009, **136**:97–107.
26. Brown EA, Pilkington JG, Nussey DH, Watt KA, Hayward AD, Tucker R, Graham AL, Paterson S, Beraldi D, Pemberton JM, Slate J: **Detecting genes for variation in parasite burden and immunological traits in a wild population: testing the candidate gene approach.** *Mol Ecol* 2013, **22**:757–773.
27. Diez-Tascon C, Keane OM, Wilson T, Zadissa A, Hyndman DL, Baird DB, McEwan JC, Crawford AM: **Microarray analysis of selection lines from outbred populations to identify genes involved with nematode parasite resistance in sheep.** *Physiol Genomics* 2005, **21**:59–69.
28. Rowe A, Gondro C, Emery D, Sangster N: **Genomic analyses of *Haemonchus contortus* infection in sheep: abomasal fistulation and two *Haemonchus* strains do not substantially confound host gene expression in microarrays.** *Vet Parasitol* 2008, **154**:71–81.
29. Knight PA, Griffith SE, Pemberton AD, Pate JM, Guarneri L, Anderson K, Talbot RT, Smith S, Waddington D, Fell M, Archibald AL, Burgess ST, Smith DW, Miller HR, Morrison IW: **Novel gene expression responses in the ovine abomasal mucosa to infection with the gastric nematode *Teladorsagia circumcincta*.** *Vet Res* 2011, **42**:78.
30. Knight JS, Baird DB, Hein WR, Pernthaner A: **The gastrointestinal nematode *Trichostrongylus colubriformis* down-regulates immune gene expression in migratory cells in afferent lymph.** *BMC Immunol* 2010, **11**:51.
31. Ingham A, Reverter A, Windon R, Hunt P, Menzies M: **Gastrointestinal nematode challenge induces some conserved gene expression changes in the gut mucosa of genetically resistant sheep.** *Int J Parasitol* 2008, **38**:431–442.
32. Beraldi D, Craig BH, Bishop SC, Hopkins J, Pemberton JM: **Phenotypic analysis of host-parasite interactions in lambs infected with *Teladorsagia circumcincta*.** *Int J Parasitol* 2008, **38**:1567–1577.
33. Gossner AG, Venturina VM, Shaw DJ, Pemberton JM, Hopkins J: **Relationship between susceptibility of Blackface sheep to *Teladorsagia circumcincta* infection and an inflammatory mucosal T cell response.** *Vet Res* 2012, **43**:26.
34. Benjamini Y, Hochberg Y: **Controlling the false discovery rate: a practical and powerful approach to multiple testing.** *J R Statist Soc B* 1995, **57**:289–300.
35. **ArrayExpress database**; 2013 [http://www.ebi.ac.uk/arrayexpress/]
36. **Sheep genome assembly Oar v3.1.**; 2013 [http://www.livestockgenomics.csiro.au/cgi-bin/gbrowse/oarv3.1/]
37. Langmead B, Trapnell C, Pop M, Salzberg SL: **Ultrafast and memory-efficient alignment of short DNA sequences to the human genome.** *Genome Biol* 2009, **10**:R25.
38. Smyth GK: **Limma: linear models for microarray data.** In *Bioinformatics and computational biology solutions using R and bioconductor*. Edited by Gentleman R, Carey V, Dudoit S, Izriyari R, Huber W. New York: Springer; 2005:397–420.
39. Gentleman RC, Carey VJ, Bates DM, Bolstad B, Dettling M, Dudoit S, Ellis B, Gautier L, Ge Y, Gentry J, Hornik K, Hothorn T, Huber W, Iacus S, Izriyari R, Leisch F, Li C, Maechler M, Rossini AJ, Sawitzki G, Smith C, Smyth G, Tierney L, Yang JY, Zhang J: **Bioconductor: open software development for computational biology and bioinformatics.** *Genome Biol* 2004, **5**:R80.
40. Andronicos N, Hunt P, Windon R: **Expression of genes in gastrointestinal and lymphatic tissues during parasite infection in sheep genetically resistant or susceptible to *Trichostrongylus colubriformis* and *Haemonchus contortus*.** *Int J Parasitol* 2010, **40**:417–429.
41. Maizels RM, Yazdanbakhsh M: **Immune regulation by helminth parasites: cellular and molecular mechanisms.** *Nat Rev Immunol* 2003, **3**:733–744.
42. Cliffe LJ, Grecis RK: **The *Trichuris muris* system: a paradigm of resistance and susceptibility to intestinal nematode infection.** *Adv Parasitol* 2004, **57**:255–307.
43. Anthony RM, Rutitzky LI, Urban JF, Stadecker MJ, Gause WC: **Protective immune mechanisms in helminth infection.** *Nat Rev Immunol* 2007, **7**:975–987.
44. Finkelman FD, Shea-Donohue T, Morris SC, Gildea L, Strait R, Madden KB, Schopf L, Urban JF: **Interleukin-4- and interleukin-13-mediated host protection against intestinal nematode parasites.** *Immunol Rev* 2004, **201**:139–155.
45. Wynn TA: **IL-13 effector functions.** *Annu Rev Immunol* 2003, **21**:425–456.
46. Ho IC, Tai TS, Pai SY: **GATA3 and the T-cell lineage: essential functions before and after T-helper-2-cell differentiation.** *Nat Rev Immunol* 2009, **9**:125–135.
47. Beraldi D, McRae AF, Gratten J, Visscher PM, Pemberton JM: **Development of a linkage map and mapping of phenotypic polymorphisms in a free-living population of Soay sheep (*Ovis aries*).** *Genetics* 2006, **173**:1521–1537.
48. Allen JE, Maizels RM: **Diversity and dialogue in immunity to helminths.** *Nat Rev Immunol* 2011, **11**:375–388.
49. Spits H, Artis D, Colonna M, Diefenbach A, Di-Santo JP, Eberl G, Koyasu S, Locksley RM, McKenzie AN, Mebius RE, Powrie F, Vivier E: **Innate lymphoid cells - a proposal for uniform nomenclature.** *Nat Rev Immunol* 2013, **13**:145–149.
50. Taylor BC, Zaph C, Troy AE, Du Y, Guild KJ, Comeau MR, Artis D: **TSLP regulates intestinal immunity and inflammation in mouse models of helminth infection and colitis.** *J Exp Med* 2009, **206**:655–667.
51. Gutzmer R, Langer K, Lisewski M, Mommert S, Rieckborn D, Kapp A, Werfel T: **Expression and function of histamine receptors 1 and 2 on human monocyte-derived dendritic cells.** *J Allergy Clin Immunol* 2002, **109**:524–531.
52. Yoneyama H, Harada A, Imai T, Baba M, Yoshie O, Zhang Y, Higashi H, Murai M, Asakura H, Matsushima K: **Pivotal role of TARC, a CC chemokine, in bacteria-induced fulminant hepatic failure in mice.** *J Clin Invest* 1998, **102**:1933–1941.
53. Komiya A, Nagase H, Yamada H, Sekiya T, Yamaguchi M, Sano Y, Hanai N, Furuya A, Ohta K, Matsushima K, Yoshie O, Yamamoto K, Hirai K: **Concerted expression of eotaxin-1, eotaxin-2, and eotaxin-3 in human bronchial epithelial cells.** *Cell Immunol* 2003, **225**:91–100.
54. Tekkanat KK, Maassab H, Miller A, Berlin AA, Kunkel SL, Lukacs NW: **RANTES (CCL5) production during primary respiratory syncytial virus infection exacerbates airway disease.** *Eur J Immunol* 2002, **32**:3276–3284.
55. Calandra T, Roger T: **Macrophage migration inhibitory factor: a regulator of innate immunity.** *Nat Rev Immunol* 2003, **3**:791–800.
56. Huang RB, Eniola-Adefeso O: **Shear stress modulation of IL-1 β -induced E-selectin expression in human endothelial cells.** *PLoS One* 2012, **7**:e31874.
57. Kim I, Morimura K, Shah Y, Yang Q, Ward JM, Gonzalez FJ: **Spontaneous hepatocarcinogenesis in farnesoid X receptor-null mice.** *Carcinogenesis* 2007, **28**:940–946.
58. Rosenblum MD, Olasz E, Woodliff JE, Johnson BD, Konkol MC, Gerber KA, Orentas RJ, Sandford G, Truitt RL: **CD200 is a novel p53-target gene involved in apoptosis-associated immune tolerance.** *Blood* 2004, **103**:2691–2698.
59. Voice JK, Dorsam G, Chan RC, Grininger C, Kong Y, Goetzl EJ: **Immuno-effer and immunoregulatory activities of vasoactive intestinal peptide.** *Regul Pept* 2002, **109**:199–208.
60. Grainger JR, Smith KA, Hewitson JP, McSorley HJ, Harcus Y, Filbey KJ, Finney CA, Greenwood EJ, Knox DP, Wilson MS, Belkaid Y, Rudensky AY, Maizels RM: **Helminth secretions induce de novo T cell Foxp3 expression and regulatory function through the TGF- β pathway.** *J Exp Med* 2010, **207**:2331–2341.

doi:10.1186/1297-9716-44-68

Cite this article as: Gossner et al.: Exploring the abomasal lymph node transcriptome for genes associated with resistance to the sheep nematode *Teladorsagia circumcincta*. *Veterinary Research* 2013 **44**:68.

Submit your next manuscript to BioMed Central and take full advantage of:

- Convenient online submission
- Thorough peer review
- No space constraints or color figure charges
- Immediate publication on acceptance
- Inclusion in PubMed, CAS, Scopus and Google Scholar
- Research which is freely available for redistribution

Submit your manuscript at
www.biomedcentral.com/submit

